



Nanoface

Control Panel Guide

Nanoface Control Panel Guide

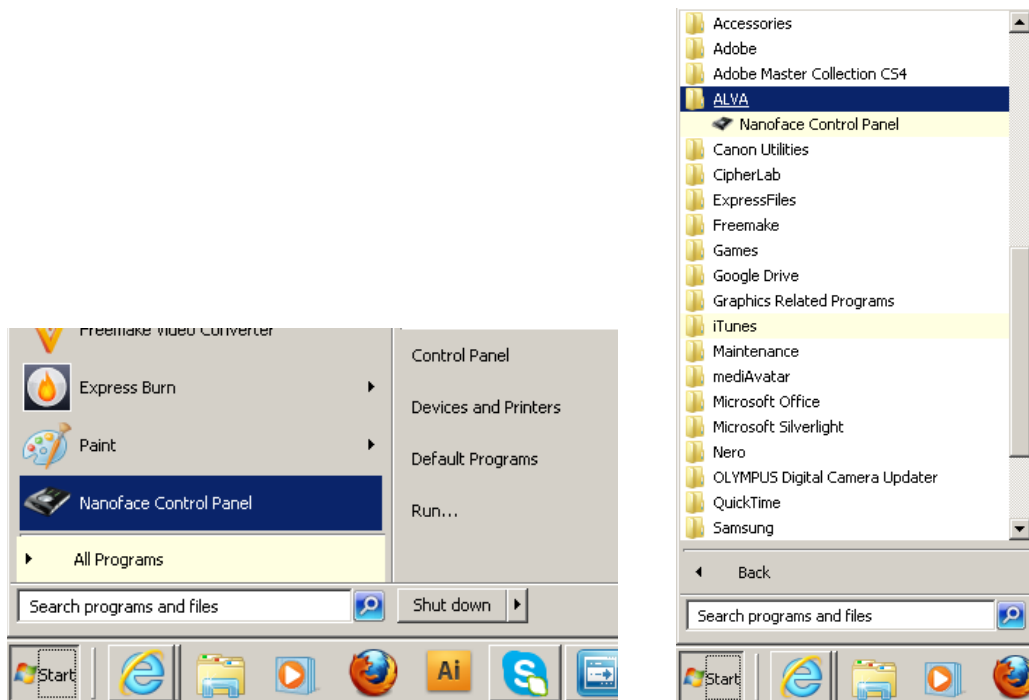
When you have updated the Nanoface to firmware v1.1.2, you are ready to use the latest Nanoface control panel. Please read the following for control panel operation instructions.

The control panel supports both Windows and Mac; please follow the “Driver Installation” instructions in the Nanoface Manual (page 14-15 for Windows or page 16-17 for Mac).

On Windows:

After installation and a reboot, the control panel is found in

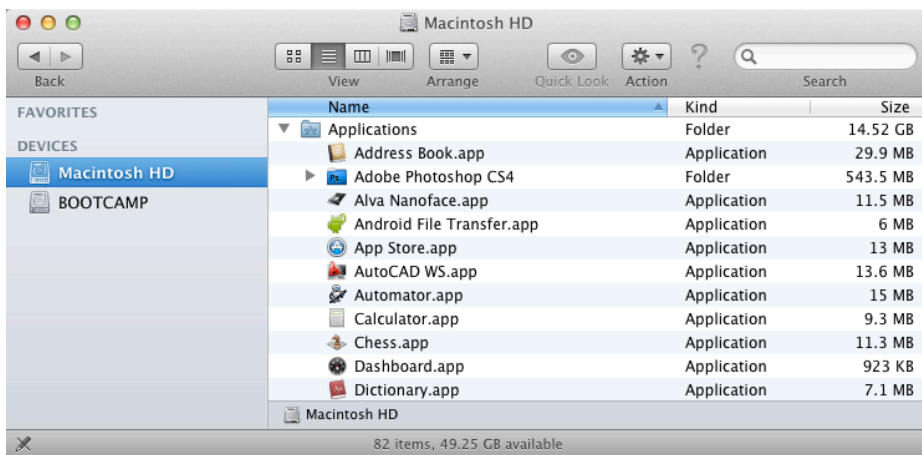
Start > Control Panel > ALVA Nanoface or Start > All Programs > ALVA > Nanoface Control Panel



On Macintosh:

After installation and a reboot, the control panel is found in

Macintosh HD > Applications > ALVA Nanoface.app



Easy Mode and Expert Mode

The Latest Control panel has two modes, “**Easy Mode**” and “**Expert Mode**”

“**Easy Mode**” offers simple control of the features of the Nanoface. You cannot control the input gain or output levels in Easy Mode, it only toggles (ON/OFF) the available functions. You can still adjust the gain and output levels on the Nanoface by using the built-in knob.

“**Expert Mode**” is the advanced control surface. Users can adjust the levels such as microphone preamplifier gain, analogue input, output, and headphone levels, etc. Also, it will show you the internal signal routing of the Nanoface and show you a reference for the connections to and from different compatible equipment.

Please note that:

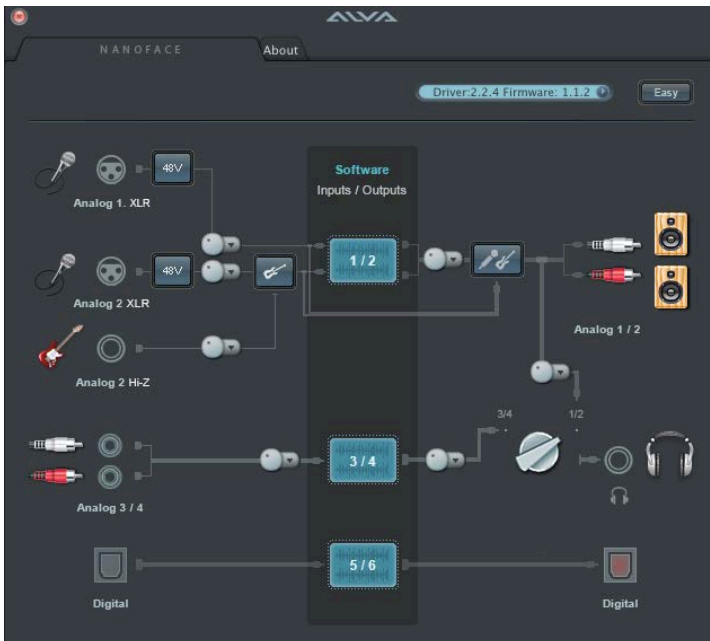
*Firmware and driver do not notify about device state changes (and never will). However any change will be applied by the control panel at the next user action that controls a device feature.

*Audio will be stopped on any user control actions. Audio will continue after the action.

Easy Mode:

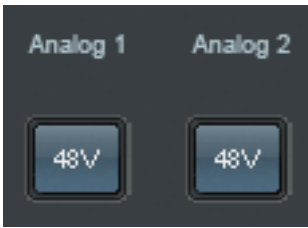


Expert Mode:



Features of "Easy Mode":

1. Turn phantom power (48V) on/off for the analog inputs 1/2 (microphones)



2. Switch analog input 2 to the Hi-Z instrument input ("guitar input")



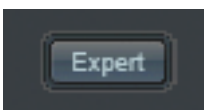
3. Select headphones output source channels 1/2 or 3/4



4. Turn zero latency hardware monitoring ON and OFF



5. Switch to "Expert Mode"

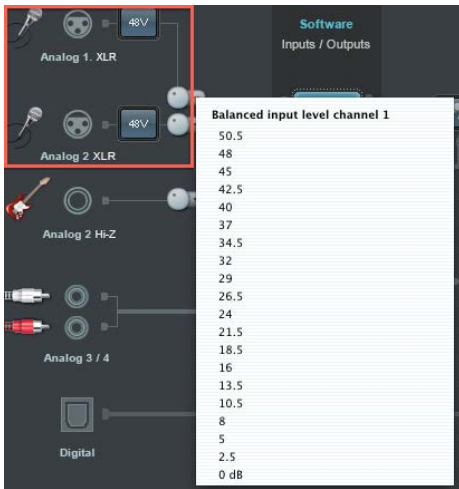


6. Check for new software updates. (Shows the currently installed driver and firmware version)

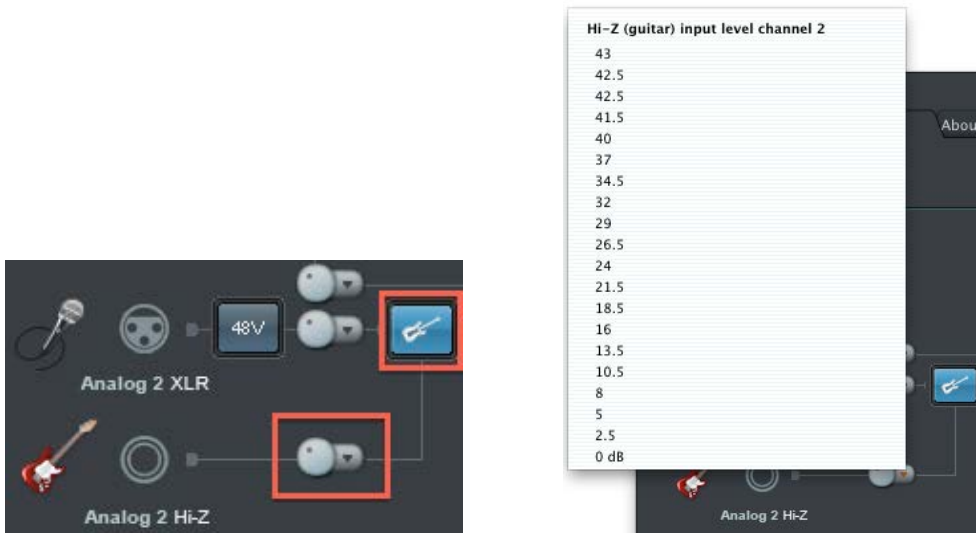


Features of Expert Mode:

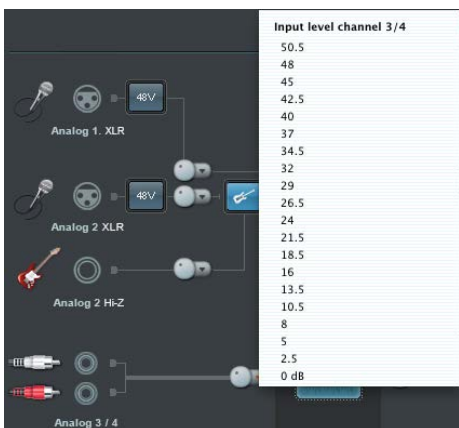
1. Turn phantom power (48V) on/off for the analog inputs 1/2 (microphones), and control preamp gain settings. You have control of preamp gain from 0dB up to 50.5dB for the microphone.



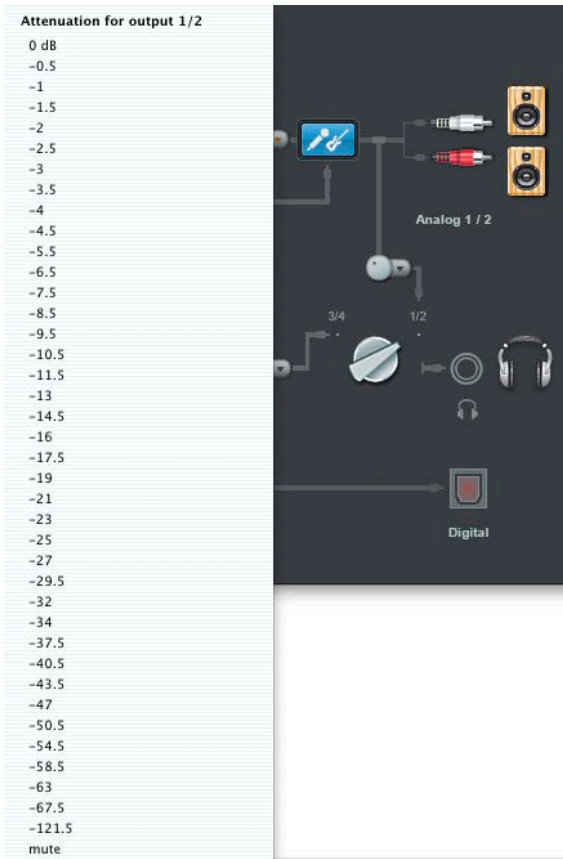
2. Switch analog input 2 to the Hi-Z instrument input ("guitar input"). You have control of preamp gain from 0dB up to 50.5dB for the input.



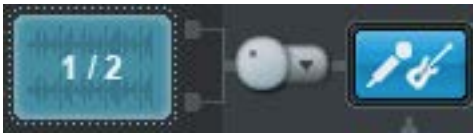
3. Set input level channel 3/4 (10dBu 1.1 – 2k Ohm input impedance)



4. Set attenuation for output 1/2 (7.75dBu@ 0dB FS: 100 Ohm output impedance)



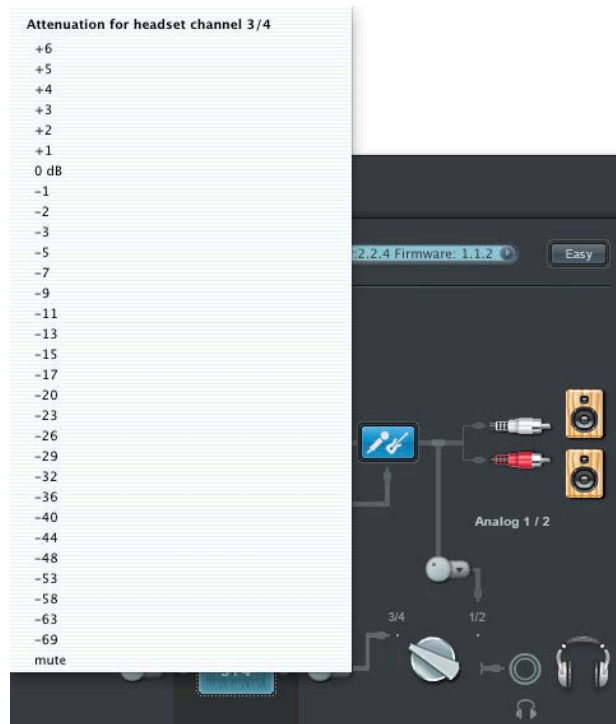
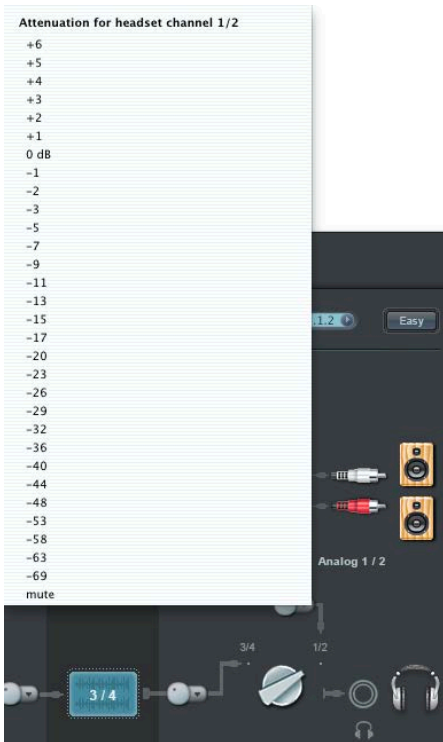
5. Turn zero latency hardware monitoring ON and OFF



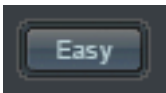
6. Select headphones output source channels 1/2 or 3/4



7. Set attenuation for headset channel 1/2 or 3/4 (10dBu@ 0dB FS: 80 Ohm phones output impedance)



8. Switch to "Easy Mode"



9. Check for new software updates. (Shows the currently installed driver and firmware version)



10. "About" shows the Nanoface "Driver Download" link and the version of the control panel.



LICENSE AGREEMENT

END-USER LICENSE AGREEMENT FOR ALVA Nanoface. IMPORTANT PLEASE READ THE TERMS AND CONDITIONS OF THIS LICENSE AGREEMENT CAREFULLY BEFORE CONTINUING WITH THE ALVA DRIVER AND CONTROL PANEL INSTALL: ALVA Nanoface Driver and Control Panel, End-User License Agreement ("EULA") is a legal agreement between you (either an individual or a single entity) and Audio AG. for the ALVA software product(s) identified above which may include associated software components, media, printed materials, and "online" or electronic documentation ("ALVA Nanoface Driver and Control Panel"). By installing, copying, or otherwise using the SOFTWARE PRODUCT, you agree to be bound by the terms of this EULA. This license agreement represents the entire agreement concerning the program between you and Audio AG, (referred to as "licenser"), and it supersedes any prior proposal, representation, or understanding between the parties. If you do not agree to the terms of this EULA, do not install or use the ALVA Nanoface Driver and Control Panel.

The ALVA Nanoface Driver and Control Panel is protected by copyright laws and international copyright treaties, as well as other intellectual property laws and treaties. The ALVA Nanoface Driver and Control Panel is licensed, not sold.

1. GRANT OF LICENSE. The ALVA Nanoface Driver and Control Panel is licensed as follows: **(a) Installation and Use.** Audio AG grants you the right to install and use copies of the ALVA Nanoface Driver and Control Panel on your computer running a validly licensed copy of the operating system for which the ALVA Nanoface Driver and Control Panel was designed [e.g., Windows 95, Windows NT, Windows 98, Windows 2000, Windows 2003, Windows XP, Windows ME, Windows Vista].

(b) Backup Copies. You may also make copies of the ALVA Nanoface Driver and Control Panel as may be necessary for backup and archival purposes.

2. DESCRIPTION OF OTHER RIGHTS AND LIMITATIONS.

(a) Maintenance of Copyright Notices. You must not remove or alter any copyright notices on any and all copies of the ALVA Nanoface Driver and Control Panel.

(b) Distribution. You may not distribute registered copies of the ALVA Nanoface Driver and Control Panel to third parties. Evaluation versions available for download from ALVA 's websites may be freely distributed.

(c) Prohibition on Reverse Engineering, Decompilation, and Disassembly. You may not reverse engineer, decompile, or disassemble the ALVA Nanoface Driver and Control Panel, except and only to the extent that such activity is expressly permitted by applicable law notwithstanding this limitation.

(d) Rental. You may not rent, lease, or lend the ALVA Nanoface Driver and Control Panel.

(e) Support Services. Audio AG may provide you with support services related to the ALVA Nanoface Driver and Control Panel("Support Services"). Any supplemental software code provided to you as part of the Support Services shall be considered part of the ALVA Nanoface Driver and Control Panel and subject to the terms and conditions of this EULA.

(f) Compliance with Applicable Laws. You must comply with all applicable laws regarding use of the ALVA Nanoface Driver and Control Panel.

3. TERMINATION Without prejudice to any other rights, Audio AG may terminate this EULA if you fail to comply with the terms and conditions of this EULA. In such event, you must destroy all copies of the ALVA Nanoface Driver and Control Panel in your possession.

4. COPYRIGHT All title, including but not limited to copyrights, in and to the ALVA Nanoface Driver and Control Panel and any copies thereof are owned by ALVA and Audio AG or its suppliers. All title and intellectual property rights in and to the content which may be accessed through use of the ALVA Nanoface Driver and Control Panel is the property of the respective content owner and may be protected by applicable copyright or other intellectual property laws and treaties. This EULA grants you no rights to use such content. All rights not expressly granted are reserved by Audio AG.

5. NO WARRANTIES Audio AG expressly disclaims any warranty for the ALVA Nanoface Driver and Control Panel The ALVA Nanoface Driver and Control Panel is provided 'As Is' without any express or implied warranty of any kind, including but not limited to any warranties of merchantability, non-infringement, or fitness of a particular purpose. Audio AG does not warrant or assume responsibility for the accuracy or completeness of any information, text, graphics, links or other items contained within the ALVA Nanoface Driver and Control Panel. Audio AG makes no warranties respecting any harm that may be caused by the transmission of a computer virus, worm, time bomb, logic bomb, or other such computer program. Audio AG further expressly disclaims any warranty or representation to Authorized Users or to any third party.

6. LIMITATION OF LIABILITY In no event shall Audio AG be liable for any damages (including, without limitation, lost profits, business interruption, or lost information) rising out of 'Authorized Users' use of or inability to use the ALVA Nanoface Driver and Control Panel, even if Audio AG has been advised of the possibility of such damages. In no event will Audio AG be liable for loss of data or for indirect, special, incidental, consequential (including lost profit), or other damages based in contract, tort or otherwise. Audio AG shall have no liability with respect to the content of the ALVA Nanoface Driver and Control Panel or any part thereof, including but not limited to errors or omissions contained therein, libel, infringements of rights of publicity, privacy, trademark rights, business interruption, personal injury, loss of privacy, moral rights or the disclosure of confidential information.